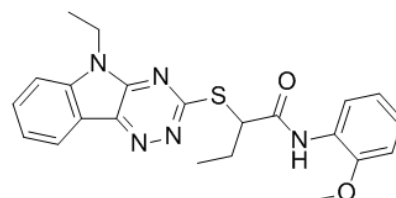


**Product Name** : SW-044248  
**Cat. No.** : PC-45667  
**CAS No.** : 522650-83-5  
**Molecular Formula** : C<sub>22</sub>H<sub>23</sub>N<sub>5</sub>O<sub>2</sub>S  
**Molecular Weight** : 421.5153  
**Target** : Topoisomerase  
**Solubility** : DMSO: ≥ 30 mg/mL



## Biological Activity

SW-044248 is a potent, selective inhibitor of Topoisomerase I (**Topo I**), inhibits Top I differently from camptothecin, shows selective toxicity for some NSCLC cell lines.

## References

- Zubovych IO, et al. *Mol Cancer Ther.* 2016 Jan;15(1):23-36.  
Kim HS, et al. *Cell.* 2013 Oct 24;155(3):552-66.

**Caution: Product has not been fully validated for medical applications. Lab Use Only!**

E-mail: tech@probechem.com